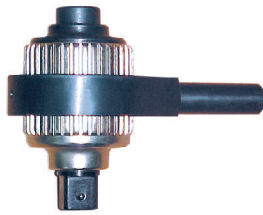


SLIM TORQUE MULTIPLIERS

Slim - Compact In Size



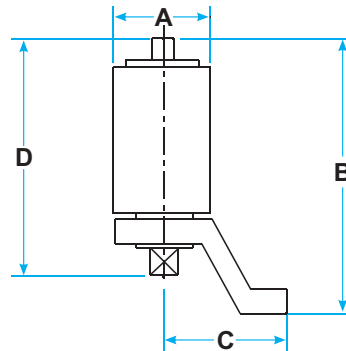
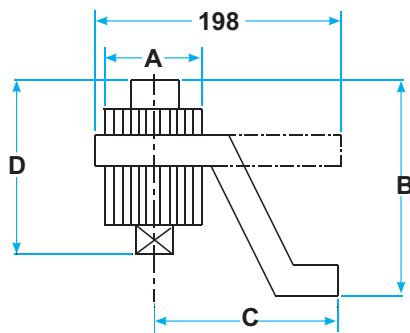
STM - 1



STM - 2



STM - 3



MODEL	STM - 01	STM - 02	STM - 03
A	81	88	88
B	133-175	272	272
C	165	141	151
D	149	207	217

Features :

- Compact Size : Compact in size hence can be used in constrained areas.
- Ratio : Higher reduction ratio for low input.
- Safety : Safety shear pin at the input provisioned to prevent overloading.
- AWUR : In built Anti-Windup Mechanism reduces operators effort. Can be used with non-ratchet type torque wrench.
- Pin Lock : Pin Lock mechanism at output Sq. Drive for positive locking of socket.
- Reaction Arm : Different type of reaction arm available as per user requirement.
- Accuracy : Better than $\pm 4\%$ with very high repeatability.

Model No.	Torque Capacity			Reduction Ratio	Sq. Drive		O.D. mm	Weight kg	Recommended Torque Wrench
	N m	Lb ft	Kg m		input	output			
STM - 1	2500	1845	255	1 : 8	1/2" F	1"	81	4.3	PVTR - 3000
STM - 2	3200	2362	326	1 : 10	1/2" F	1"	88	6.3	
STM - 3	4200	3100	428	1 : 10	3/4" F	1.1/2"	88	6.8	PVTR - 5000

Note : STM - 2 and STM - 3 are fitted with Anti-Wind-Up Ratchet (AWUR) Mechanism. STM-1 can be provided with AWUR.