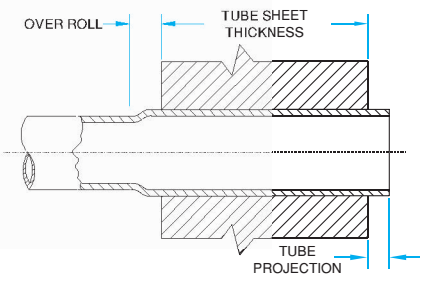
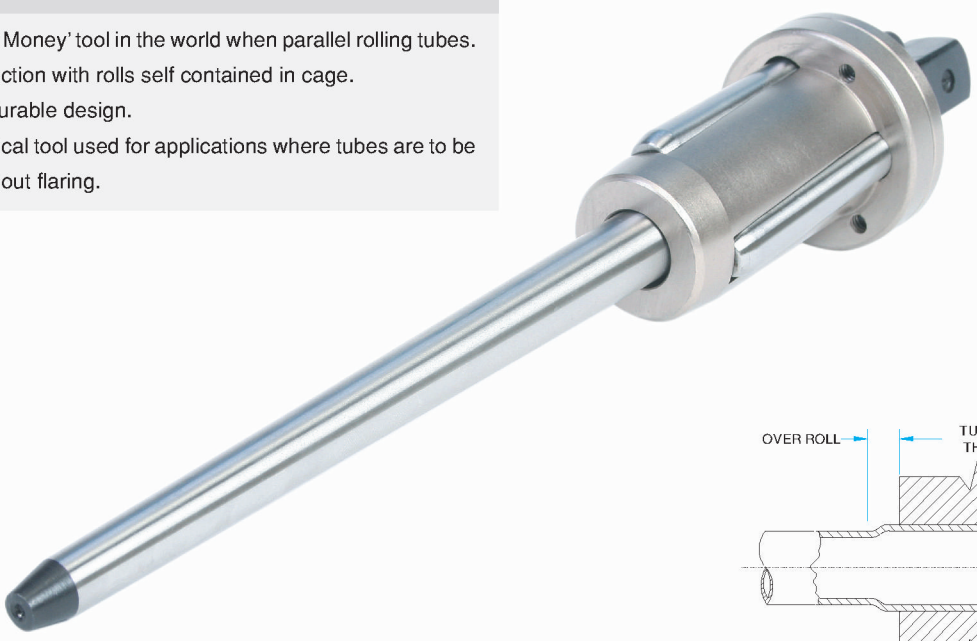


7/8" - 4 1/2"
O.D.

A SERIES

- Features :*
- Best 'Value for Money' tool in the world when parallel rolling tubes.
 - Sturdy construction with rolls self contained in cage.
 - Time tested, durable design.
 - Use - Economical tool used for applications where tubes are to be expanded without flaring.

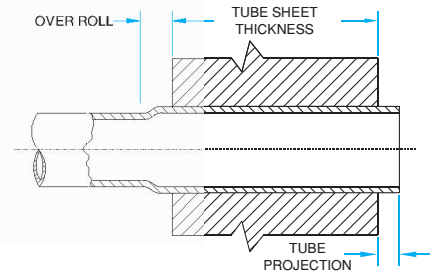
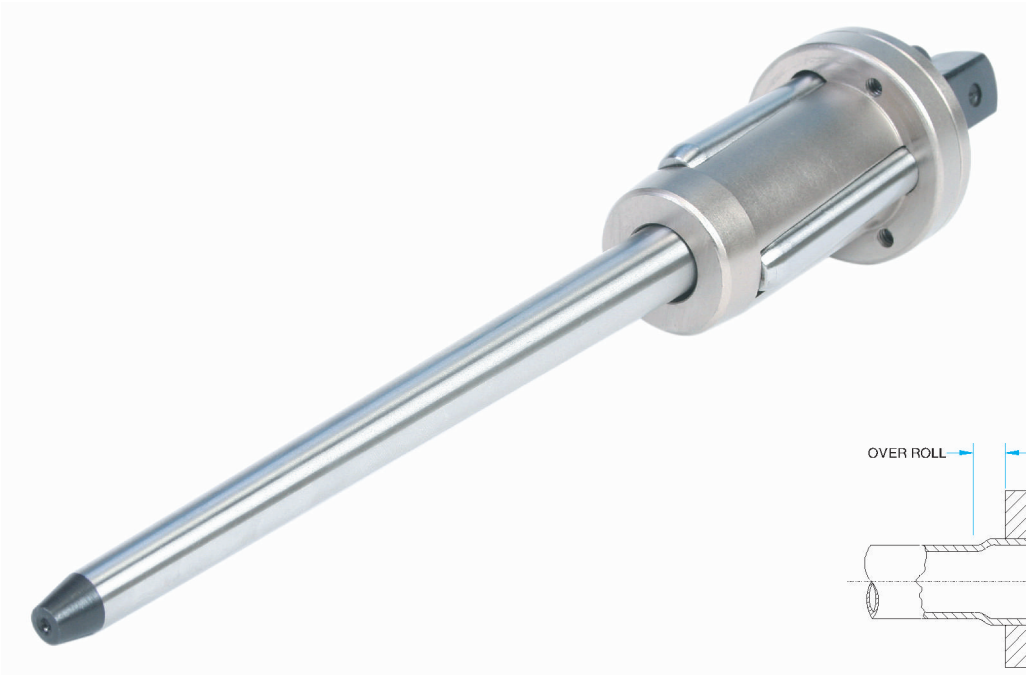


Tube O.D.	Tube Thickness		Tube O.D.	Tube Thickness		Minimum I.D. Tool Enters		Maximum Expansion Of Tool		Tube Expander Model Number Tube Sheet Thickness Range				
	inch	bwg		inch	bwg	inch	mm	inch	mm	inch	1/2" To 7/8"	3/4" To 1.1/8"	1.1/8" To 1.5/8"	1.5/8" To 2.1/8"
7/8	15	.072	1	10	.134	18.1	.712	20.4	.803	A-31/2	A-31/3	-	-	-
7/8	16	.065				18.4	.724	20.7	.814	A-32/2	A-32/3	-	-	-
7/8	17	.058	1	11	.120	18.8	.740	21.1	.830	A-33/2	A-33/3	-	-	-
7/8	18	.049	1	12	.109	19.4	.763	21.6	.850	A-34/2	A-34/3	-	-	-
7/8	19 & 20	.042 & .035	1.1/8	8	.165	19.7	.775	22.3	.877	A-35/2	A-35/3	-	-	-
1	13	.095				20.1	.791	22.4	.881	A-36/2	A-36/3	-	-	-
1	14	.083	1.1/8	9	.148	20.6	.811	23.1	.909	A-37/2	A-37/3	A-37/4	-	-
1	15 & 16	.072 & .065	1.1/8	10	.134	21.3	.838	23.8	.937	A-38/2	A-38/3	A-38/4	-	-
1	17 & 18	.058 & .048	1.1/8	11	.120	22.0	.866	24.5	.964	A-39/2	A-39/3	A-39/4	-	-
1	19 & 20	.042 & .035	1.1/8	12	.109	22.4	.881	25.0	.984	A-40/2	A-40/3	A-40/4	-	-
1.1/4	8	.165	1.1/8	13	.095	23.3	.917	25.9	1.019	A-41/2	A-41/3	A-41/4	-	-
1.1/4	9	.148	1.1/8	14	.083	23.8	.937	26.5	1.043	A-42/2	A-42/3	A-42/4	-	-
1.1/4	10	.134	1.1/8	15 & 16	.072 & .065	24.4	.960	27.2	1.070	A-43/2	A-43/3	A-43/4	-	-
1.1/4	11	.120				25.2	.992	28.0	1.102	A-44/2	A-44/3	A-44/4	-	-
1.1/4	12	.109				25.7	1.011	28.5	1.122	A-45/2	A-45/3	A-45/4	-	-
1.1/4	13	.095	1.3/8	8	.165	26.1	1.027	28.8	1.133	A-46/2	A-46/3	A-46/4	-	-
1.1/4	14	.083				26.4	1.039	29.2	1.149	A-47/2	A-47/3	A-47/4	-	-
1.1/4	15	.072	1.3/8	9	.148	26.9	1.059	29.7	1.169	A-48/2	A-48/3	A-48/4	-	-
1.1/4	16	.065	1.3/8	10	.134	27.6	1.086	30.4	1.196	A-49/2	A-49/3	A-49/4	A-49/5	A-49/6
1.1/2	7	.180	1.3/8	11	.120	28.3	1.114	31.2	1.228	A-50/2	A-50/3	A-50/4	A-50/5	A-50/6
1.1/2	8	.165	1.3/8	12	.109	28.8	1.133	31.7	1.248	A-51/2	A-51/3	A-51/4	A-51/5	A-51/6
1.1/2	9	.148	1.3/8	13 & 14	.095 & .083	29.5	1.161	33.4	1.314	A-52/2	A-52/3	A-52/4	A-52/5	A-52/6
1.1/2	10	.134	1.3/8	15 & 16	.072 & .065	30.0	1.181	34.1	1.342	A-53/2	A-53/3	A-53/4	A-53/5	A-53/6
1.1/2	11 & 12	.120 & .109				30.6	1.204	34.8	1.370	A-54/2	A-54/3	A-54/4	A-54/5	A-54/6
1.1/2	13	.095	1.3/4	5	.220	31.4	1.236	35.6	1.401	A-55/2	A-55/3	A-55/4	A-55/5	A-55/6
1.1/2	14 & 15	.083 & .072	1.3/4	6	.203	32.6	1.283	36.8	1.448	A-56/2	A-56/3	A-56/4	A-56/5	A-56/6
			1.3/4	7	.180	33.4	1.314	38.1	1.500	A-57/2	A-57/3	A-57/4	A-57/5	A-57/6
			1.3/4	8	.165	34.2	1.346	38.7	1.523	A-58/2	A-58/3	A-58/4	A-58/5	A-58/6
2	3	.259	1.3/4	9 & 10	.148 & .134	35.0	1.377	40.6	1.598	A-59/2	A-59/3	A-59/4	A-59/5	A-59/6
2	4	.238	1.3/4	11 & 12	.120 & .109	36.6	1.440	42.2	1.661	A-60/2	A-60/3	A-60/4	A-60/5	A-60/6
2	5 & 6	.220 & .203	1.3/4	13 & 14	.095 & .083	38.2	1.503	43.8	1.712	A-61/2	A-61/3	A-61/4	A-61/5	A-61/6
2	7 & 8	.180 & .165	1.3/4	15 & 16	.072 & .065	39.8	1.566	45.4	1.787	A-62/2	A-62/3	A-62/4	A-62/5	A-62/6
2	9 & 10	.148 & .134	2.1/4	3	.259	41.4	1.629	47.0	1.850	A-63/2	A-63/3	A-63/4	A-63/5	A-63/6
2	11 - 13	.120 - .095	2.1/4	4	.238	42.9	1.688	49.5	1.948	A-64/2	A-64/3	A-64/4	A-64/5	A-64/6
2	14 - 16	.083 - .065	2.1/4	6 & 7	.203 & .180	44.5	1.751	51.1	2.011	A-65/2	A-65/3	A-65/4	A-65/5	A-65/6
2	17 & 18	.058 & .049	2.1/4	8 & 9	.165 & .148	46.1	1.814	52.7	2.074	A-66/2	A-66/3	A-66/4	A-66/5	A-66/6

A SERIES

$\frac{7}{8}$ "- $4\frac{1}{2}$ "
O.D.

A SERIES

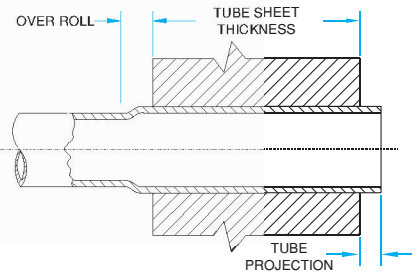
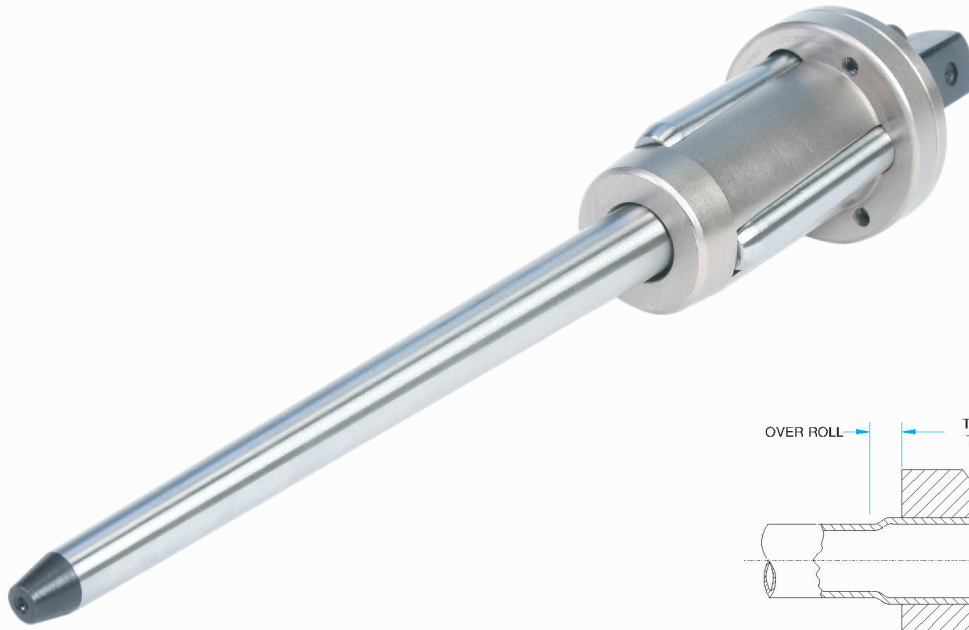


Spare Rollers Set Model Number Tube Sheet Thickness Range					Mandrel Square Drive Size inch	Spare Mandrel Model Number		
1/2" To 7/8"	3/4" To 1.1/8"	1.1/8" To 1.5/8"	1.5/8" To 2.1/8"	2.1/8" To 2.5/8"		Drum Type	Header Type	Short Series Mandrel Set (No. Of Mandrels)
15-2-RS	15-3-RS	-	-	-	3/8	DM-11	-	-
15-2-RS	15-3-RS	-	-	-	3/8	DM-12	-	-
16-2-RS	16-3-RS	-	-	-	3/8	DM-12	-	-
20-2-RS	20-3-RS	-	-	-	3/8	DM-12	-	-
17-2-RS	17-3-RS	-	-	-	3/8	DM-13	-	-
18-2-RS	18-3-RS	-	-	-	3/8	DM-12	-	-
18-2-RS	18-3-RS	18-4-RS	-	-	3/8	DM-13	HM-13	SM-13 (2)
19-2-RS	19-3-RS	19-4-RS	-	-	3/8	DM-13	HM-13	SM-13 (2)
21-2-RS	21-3-RS	21-4-RS	-	-	3/8	DM-13	HM-13	SM-13 (2)
21-2-RS	21-3-RS	21-4-RS	-	-	3/8	DM-14	HM-14	SM-14 (2)
22-2-RS	22-3-RS	22-4-RS	-	-	3/8	DM-14	HM-14	SM-14 (2)
23-2-RS	23-3-RS	23-4-RS	-	-	1/2	DM-15	HM-15	SM-15 (2)
24-2-RS	24-3-RS	24-4-RS	-	-	1/2	DM-15	HM-15	SM-15 (2)
26-2-RS	26-3-RS	26-4-RS	-	-	1/2	DM-16	HM-16	SM-16 (2)
27-2-RS	27-3-RS	27-4-RS	-	-	1/2	DM-16	HM-16	SM-16 (2)
31-2-RS	31-3-RS	31-4-RS	-	-	1/2	DM-16	HM-16	SM-16 (2)
28-2-RS	28-3-RS	28-4-RS	-	-	1/2	DM-17	HM-17	SM-17 (2)
29-2-RS	29-3-RS	29-4-RS	-	-	1/2	DM-17	HM-17	SM-17 (2)
30-2-RS	30-3-RS	30-4-RS	30-5-RS	30-6-RS	1/2	DM-17	HM-17	SM-17 (2)
30-2-RS	30-3-RS	30-4-RS	30-5-RS	30-6-RS	1/2	DM-18	HM-18	SM-18 (2)
32-2-RS	32-3-RS	32-4-RS	32-5-RS	32-6-RS	1/2	DM-18	HM-18	SM-18 (2)
28-2-RS	28-3-RS	28-4-RS	28-5-RS	28-6-RS	1/2	DM-20	HM-20	SM-20 (2)
29-2-RS	29-3-RS	29-4-RS	29-5-RS	29-6-RS	1/2	DM-20	HM-20	SM-20 (2)
30-2-RS	30-3-RS	30-4-RS	30-5-RS	30-6-RS	1/2	DM-20	HM-20	SM-20 (2)
33-2-RS	33-3-RS	33-4-RS	33-5-RS	33-6-RS	1/2	DM-20	HM-20	SM-20 (2)
32-2-RS	32-3-RS	32-4-RS	32-5-RS	32-6-RS	1/2	DM-21	HM-21	SM-21 (2)
36-2-RS	36-3-RS	36-4-RS	36-5-RS	36-6-RS	1/2	DM-21	HM-21	SM-21 (2)
37-2-RS	37-3-RS	37-4-RS	37-5-RS	37-6-RS	1/2	DM-21	HM-21	SM-21 (2)
33-2-RS	33-3-RS	33-4-RS	33-5-RS	33-6-RS	3/4	DM-22	HM-22	SM-22 (3)
37-2-RS	37-3-RS	37-4-RS	37-5-RS	37-6-RS	3/4	DM-22	HM-22	SM-22 (3)
38-2-RS	38-3-RS	38-4-RS	38-5-RS	38-6-RS	3/4	DM-22	HM-22	SM-22 (3)
39-2-RS	39-3-RS	39-4-RS	39-5-RS	39-6-RS	3/4	DM-22	HM-22	SM-22 (3)
40-2-RS	40-3-RS	40-4-RS	40-5-RS	40-6-RS	3/4	DM-22	HM-22	SM-22 (3)
40-2-RS	40-3-RS	40-4-RS	40-5-RS	40-6-RS	3/4	DM-23	HM-23	SM-23 (3)
41-2-RS	41-3-RS	41-4-RS	41-5-RS	41-6-RS	3/4	DM-23	HM-23	SM-23 (3)
42-2-RS	42-3-RS	42-4-RS	42-5-RS	42-6-RS	3/4	DM-23	HM-23	SM-23 (3)

www.powermaster.in



A SERIES

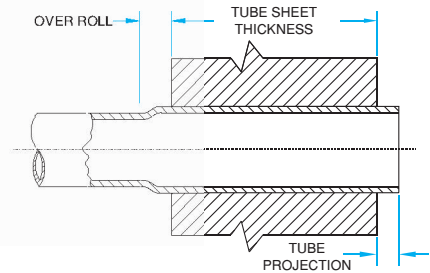


Tube O.D.	Tube Thickness		Tube O.D.	Tube Thickness		Minimum I.D. Tool Enters		Maximum Expansion Of Tool		Tube Expander Model Number Tube Sheet Thickness Range				
	inch	bwg		inch	bwg	inch	mm	inch	mm	inch	1/2" To 7/8"	3/4" To 1.1/8"	1.1/8" To 1.5/8"	1.5/8" To 2.1/8"
2.1/2	3	.259	2.1/4	10 & 11	.134 & .120	47.7	1.877	54.3	2.137	A-67/2	A-67/3	A-67/4	A-67/5	A-67/6
2.1/2	4 & 5	.238 & .220	2.1/4	12 & 13	.109 & .095	49.3	1.940	55.9	2.200	A-68/2	A-68/3	A-68/4	A-68/5	A-68/6
2.1/2	6 & 7	.203 & .180	2.1/4	14 - 16	.083 - .065	50.8	2.000	57.8	2.275	A-69/2	A-69/3	A-69/4	A-69/5	A-69/6
2.1/2	8 & 9	.165 & .148	2.3/4	3	.259	52.4	2.062	59.4	2.338	A-70/2	A-70/3	A-70/4	A-70/5	A-70/6
2.1/2	10 & 11	.134 & .120	2.3/4	4	.238	54.0	2.125	61.0	2.401	A-71/2	A-71/3	A-71/4	A-71/5	A-71/6
2.1/2	12 - 14	.109 - .083	2.3/4	5 & 6	.220 & .203	55.6	2.188	64.0	2.519	A-72/2	A-72/3	A-72/4	A-72/5	A-72/6
2.1/2	15 & 16	.072 & .065	2.3/4	7 & 8	.180 & .165	57.2	2.251	65.6	2.582	A-73/2	A-73/3	A-73/4	A-73/5	A-73/6
3	3	.259	2.3/4	9 & 10	.148 & .134	58.6	2.307	67.0	2.637	A-74/2	A-74/3	A-74/4	A-74/5	A-74/6
3	4	.238	2.3/4	11 - 13	.120 - .095	60.4	2.377	68.8	2.708	A-75/2	A-75/3	A-75/4	A-75/5	A-75/6
3	5 & 6	.220 & .203	2.3/4	14 - 16	.083 - .065	62.2	2.448	70.4	2.771	A-76/2	A-76/3	A-76/4	A-76/5	A-76/6
3	7 & 8	.180 & .165	-	-	-	63.6	2.503	72.0	2.834	A-77/2	A-77/3	A-77/4	A-77/5	A-77/6
3	9 & 10	.148 & .134	3.1/4	3	.259	65.0	2.559	73.4	2.889	A-78/2	A-78/3	A-78/4	A-78/5	A-78/6
3	11 - 13	.120 - .095	3.1/4	4	.238	66.6	2.622	75.0	2.952	A-79/2	A-79/3	A-79/4	A-79/5	A-79/6
3	14 - 16	.083 - .065	3.1/4	5 & 6	.220 & .203	68.3	2.688	76.9	3.027	A-80/2	A-80/3	A-80/4	A-80/5	A-80/6
3.1/2	2	.284	3.1/4	7 & 8	.180 & .165	69.9	2.751	78.5	3.090	A-81/2	A-81/3	A-81/4	A-81/5	A-81/6
3.1/2	3	.259	3.1/4	9 & 10	.148 & .134	71.5	2.814	80.1	3.153	A-82/2	A-82/3	A-82/4	A-82/5	A-82/6
3.1/2	4	.238	3.1/4	11 - 13	.120 - .095	73.1	2.877	81.7	3.216	A-83/2	A-83/3	A-83/4	A-83/5	A-83/6
3.1/2	5 & 6	.220 & .203	3.1/4	14 - 16	.083 - .065	74.6	2.937	84.2	3.314	A-84/2	A-84/3	A-84/4	A-84/5	A-84/6
3.1/2	7 & 8	.180 & .165	3.3/4	2	.084	76.2	3.000	85.5	3.366	A-85/2	A-85/3	A-85/4	A-85/5	A-85/6
3.1/2	9 - 10	.148 - .120	3.3/4	3	.259	77.8	3.062	87.4	3.440	A-86/2	A-86/3	A-86/4	A-86/5	A-86/6
3.1/2	12 - 16	.109 - .065	3.3/4	4	.238	79.4	3.125	89.0	3.503	A-87/2	A-87/3	A-87/4	A-87/5	A-87/6
			3.3/4	5 & 6	.220 & .203	81.0	3.188	90.6	3.566	A-88/2	A-88/3	A-88/4	A-88/5	A-88/6
4	2	.284	3.3/4	7 & 8	.180 & .165	82.6	3.251	92.2	3.629	A-89/2	A-89/3	A-89/4	A-89/5	A-89/6
4	3	.259	3.3/4	9 & 10	.148 & .134	84.2	3.314	93.8	3.629	A-90/2	A-90/3	A-90/4	A-90/5	A-90/6
4	4	.238	3.3/4	11 - 13	.120 - .095	85.8	3.377	96.2	3.787	A-91/2	A-91/3	A-91/4	A-91/5	A-91/6
4	5 & 6	.220 & .203	3.3/4	14 - 16	.083 - .065	87.4	3.440	97.8	3.850	A-92/2	A-92/3	A-92/4	A-92/5	A-92/6
4	7 & 8	.180 & .165	4.1/4	2		89.0	3.503	99.4	3.913	A-93/2	A-93/3	A-93/4	A-93/5	A-93/6
4	9 - 11	.148 - .120	4.1/4	3	.284	90.4	3.559	100.8	3.968	A-94/2	A-94/3	A-94/4	A-94/5	A-94/6
4	12 - 16	.109 - .065	4.1/4	4	.238	92.0	3.622	102.4	4.031	A-95/2	A-95/3	A-95/4	A-95/5	A-95/6
			4.1/4	5 & 6	.220 & .203	93.4	3.677	103.8	4.086	A-96/2	A-96/3	A-96/4	A-96/5	A-96/6
4.1/2	2	.284	4.1/4	7 & 8	.180 & .165	95.0	3.740	105.4	4.149	A-97/2	A-97/3	A-97/4	A-97/5	A-97/6
4.1/2	3	.259	4.1/4	9 - 11	.148 - .120	96.6	3.803	107.0	4.212	A-98/2	A-98/3	A-98/4	A-98/5	A-98/6
4.1/2	4 & 5	.238 & .220	4.1/4	11 - 13	.120 - .095	98.2	3.866	108.6	4.275	A-99/2	A-99/3	A-99/4	A-99/5	A-99/6
4.1/2	6 & 7	.203 & .180	-	-	-	101.2	3.984	110.0	4.330	A-100/2	A-100/3	A-100/4	A-100/5	A-100/6
4.1/2	8 & 9	.165 & .148	-	-	-	102.8	4.047	111.6	4.393	A-101/2	A-101/3	A-101/4	A-101/5	A-101/6
4.1/2	10 - 12	.134 - .109	-	-	-	104.4	4.110	113.2	4.456	A-102/2	A-102/3	A-102/4	A-102/5	A-102/6

A SERIES

7/8" - 4 1/2"
O.D.

A SERIES



Spare Rollers Set Model Number Tube Sheet Thickness Range					Mandrel Square Drive Size inch	Spare Mandrel Model Number		
1/2" To 7/8"	3/4" To 1.1/8"	1.1/8" To 1.5/8"	1.5/8" To 2.1/8"	2.1/8" To 2.5/8"		Drum Type	Header Type	Short Series Mandrel Set (No. Of Mandrels)
43-2-RS	43-3-RS	43-4-RS	43-5-RS	43-6-RS	3/4	DM-23	HM-23	SM-23 (3)
44-2-RS	44-3-RS	44-4-RS	44-5-RS	44-6-RS	3/4	DM-23	HM-23	SM-23 (3)
43-2-RS	43-3-RS	43-4-RS	43-5-RS	43-6-RS	3/4	DM-24	HM-24	SM-24 (3)
44-2-RS	44-3-RS	44-4-RS	44-5-RS	44-6-RS	3/4	DM-24	HM-24	SM-24 (3)
45-2-RS	45-3-RS	45-4-RS	45-5-RS	45-6-RS	3/4	DM-24	HM-24	SM-24 (3)
47-2-RS	47-3-RS	47-4-RS	47-5-RS	47-6-RS	3/4	DM-24	HM-24	SM-24 (3)
46-2-RS	46-3-RS	46-4-RS	46-5-RS	46-6-RS	1	DM-25	HM-25	SM-25 (3)
47-2-RS	47-3-RS	47-4-RS	47-5-RS	47-6-RS	1	DM-25	HM-25	SM-25 (3)
48-2-RS	48-3-RS	48-4-RS	48-5-RS	48-6-RS	1	DM-25	HM-25	SM-25 (3)
49-2-RS	49-3-RS	49-4-RS	49-5-RS	49-6-RS	1	DM-25	HM-25	SM-25 (3)
50-2-RS	50-3-RS	50-4-RS	50-5-RS	50-6-RS	1	DM-25	HM-25	SM-25 (3)
51-2-RS	51-3-RS	51-4-RS	51-5-RS	51-6-RS	1	DM-25	HM-25	SM-25 (3)
52-2-RS	52-3-RS	52-4-RS	52-5-RS	52-6-RS	1	DM-25	HM-25	SM-25 (3)
51-2-RS	51-3-RS	51-4-RS	51-5-RS	51-6-RS	1	DM-26	HM-26	SM-26 (4)
52-2-RS	52-3-RS	52-4-RS	52-5-RS	52-6-RS	1	DM-26	HM-26	SM-26 (4)
53-2-RS	53-3-RS	53-4-RS	53-5-RS	53-6-RS	1	DM-26	HM-26	SM-26 (4)
54-2-RS	54-3-RS	54-4-RS	54-5-RS	54-6-RS	1	DM-26	HM-26	SM-26 (4)
54-2-RS	54-3-RS	54-4-RS	54-5-RS	54-6-RS	1	DM-27	HM-27	SM-27 (4)
55-2-RS	55-3-RS	55-4-RS	55-5-RS	55-6-RS	1	DM-27	HM-27	SM-27 (4)
56-2-RS	56-3-RS	56-4-RS	56-5-RS	56-6-RS	1	DM-27	HM-27	SM-27 (4)
57-2-RS	57-3-RS	57-4-RS	57-5-RS	57-6-RS	1	DM-27	HM-27	SM-27 (4)
58-2-RS	58-3-RS	58-4-RS	58-5-RS	58-6-RS	1	DM-27	HM-27	SM-27 (4)
59-2-RS	59-3-RS	59-4-RS	59-5-RS	59-6-RS	1	DM-27	HM-27	SM-27 (4)
60-2-RS	60-3-RS	60-4-RS	60-5-RS	60-6-RS	1	DM-27	HM-27	SM-27 (4)
59-2-RS	59-3-RS	59-4-RS	59-5-RS	59-6-RS	1	DM-28	HM-28	SM-28 (4)
60-2-RS	60-3-RS	60-4-RS	60-5-RS	60-6-RS	1	DM-28	HM-28	SM-28 (4)
61-2-RS	61-3-RS	61-4-RS	61-5-RS	61-6-RS	1	DM-28	HM-28	SM-28 (4)
62-2-RS	62-3-RS	62-4-RS	62-5-RS	62-6-RS	1	DM-28	HM-28	SM-28 (4)
63-2-RS	63-3-RS	63-4-RS	63-5-RS	63-6-RS	1	DM-28	HM-28	SM-28 (4)
62-2-RS	62-3-RS	62-4-RS	62-5-RS	62-6-RS	1	DM-29	HM-29	SM-29 (4)
63-2-RS	63-3-RS	63-4-RS	63-5-RS	63-6-RS	1	DM-29	HM-29	SM-29 (4)
64-2-RS	64-3-RS	64-4-RS	64-5-RS	64-6-RS	1	DM-29	HM-29	SM-29 (4)
63-2-RS	63-3-RS	63-4-RS	63-5-RS	63-6-RS	1	DM-30	HM-30	SM-30 (4)
64-2-RS	64-3-RS	64-4-RS	64-5-RS	64-6-RS	1	DM-30	HM-30	SM-30 (4)
65-2-RS	65-3-RS	65-4-RS	65-5-RS	65-6-RS	1	DM-30	HM-30	SM-30 (4)
66-2-RS	66-3-RS	66-4-RS	66-5-RS	66-6-RS	1	DM-30	HM-30	SM-30 (4)

www.powermaster.in