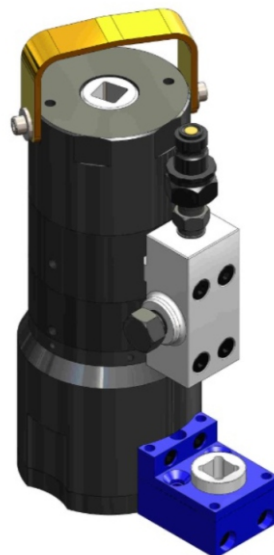


WIND MILL BOLT TENSIONERS



MSBT Series Bolt Tensioner :

These 1500 bar working pressure tensioners are specially developed from our Compact series to meet auto retract and ease of operation requirement of wind mill application.

Features :

- **Compact Design:** The tensioners are designed with smaller dia for ease of tool fitment.
- **Higher Working Pressure:** 1500 bar working pressure to generate higher load with smaller hydraulic area of tensioner.
- **Geared Nut Drive:** Geared Nut Driver to move the nut faster and with ease using standard " Square Drive Wrench.
- **Longer Stroke:** Tool is available with standard and long stroke as per application.
- **Alloy Steel Construction :** All parts are made from High Strength Alloy Steel better strength and compact design.
- **Optional Auto Spring Return:** Standard tensioners are available with optional auto spring retraction for fast and easy retraction of piston.

Technical Details:

Model No.	Stud Dia		Outer Dia	Load	Stroke	OAL	Weight
	mm	inch	mm	kN	mm	mm	Kg
MSBT-30	30	1.1/8	73	452	6	203	6.0
MSBT-33	33	1.1/4	78	516	6	229	4.0
MSBT-36	36	1.3/8	85	664	8	230	10
MSBT-39	39	1.1/2	94	862	8	252.5	4.6
MSBT-42	42	1.5/8	98	930	8	282	13
MSBT-45	45	1.3/4	108	1062	8	288	16