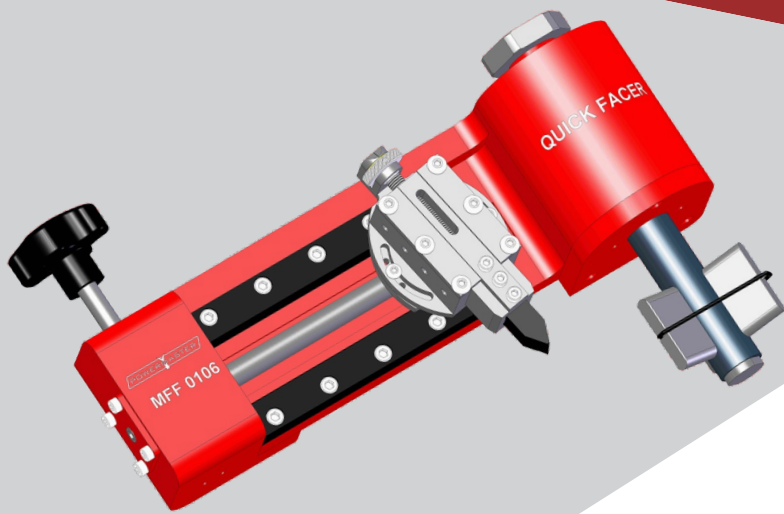


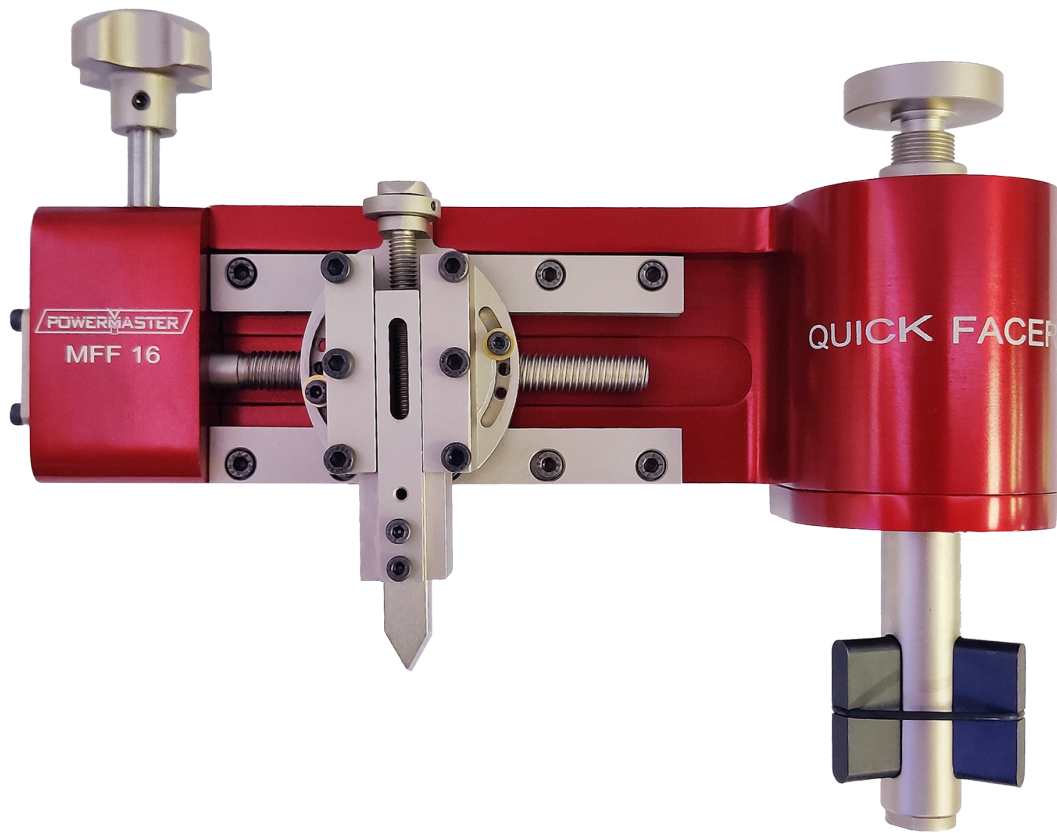
MANUAL FLANGE FACER



QUICK AND SIMPLE
RE-FACING /
RE-MACHINING

POWERMMASTER

INTRODUCTION



MFF-16 Manual Flange Facer is a handpower driven tool for on-site field machining.

The MFF-16 is equipped with two different lead screws and provides two different feed rates for repairing raised face flat pipe flanges and lens ring etc.

MFF-16 Manual Flange Facer is used to machine flat faces of different type and diameters of flanges.

The MFF-16 weighs only 6.5kg, but has a wide mounting range of 25.4mm to 152.4mm (1" - 6") ID and is capable of facing 25.4mm to 190mm (1 - 6") OD flanges using standard half-inch cutting tools.

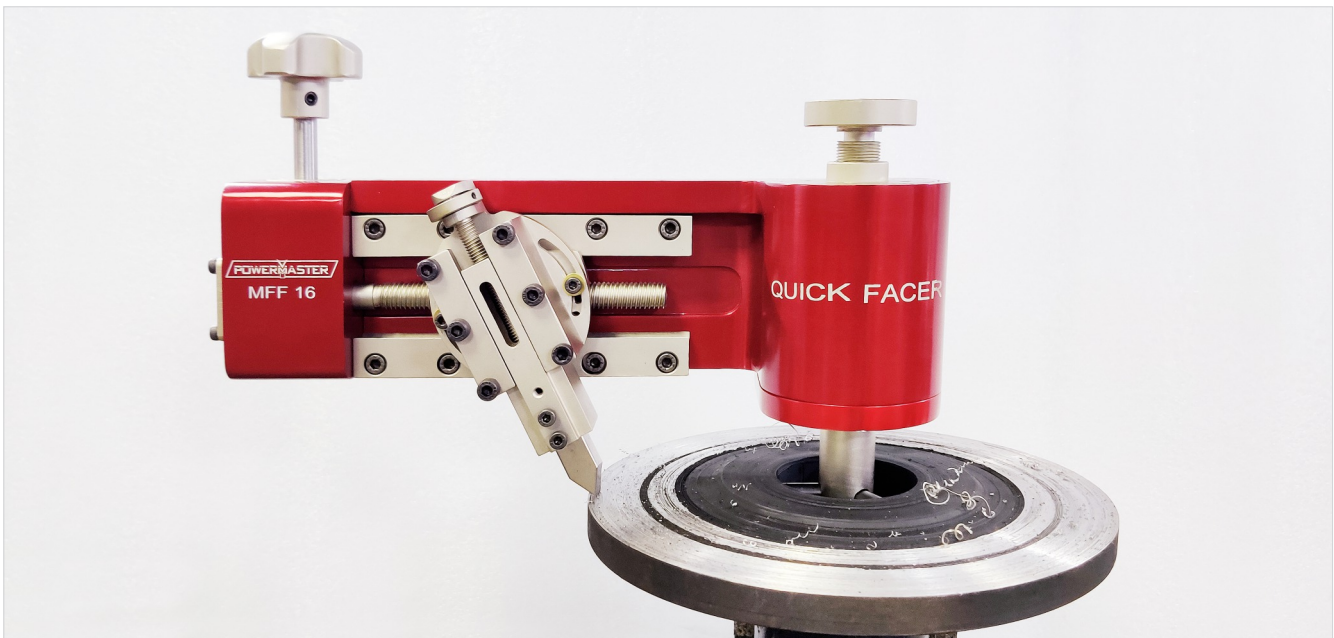
MFF-16 handpower machine tool can be set up anywhere without the need for electric, hydraulic or air power.

FEATURES

Quick and Simple Flange / Pipe Manual Facing Machine

Locking Range 25.4mm ID to 152.4mm ID (1" - 6")

- Quick and simple Re-Facing / Re-Machining.
- Usable on Raised - Face (RF) and Flat - Face (FF) joint flanges.

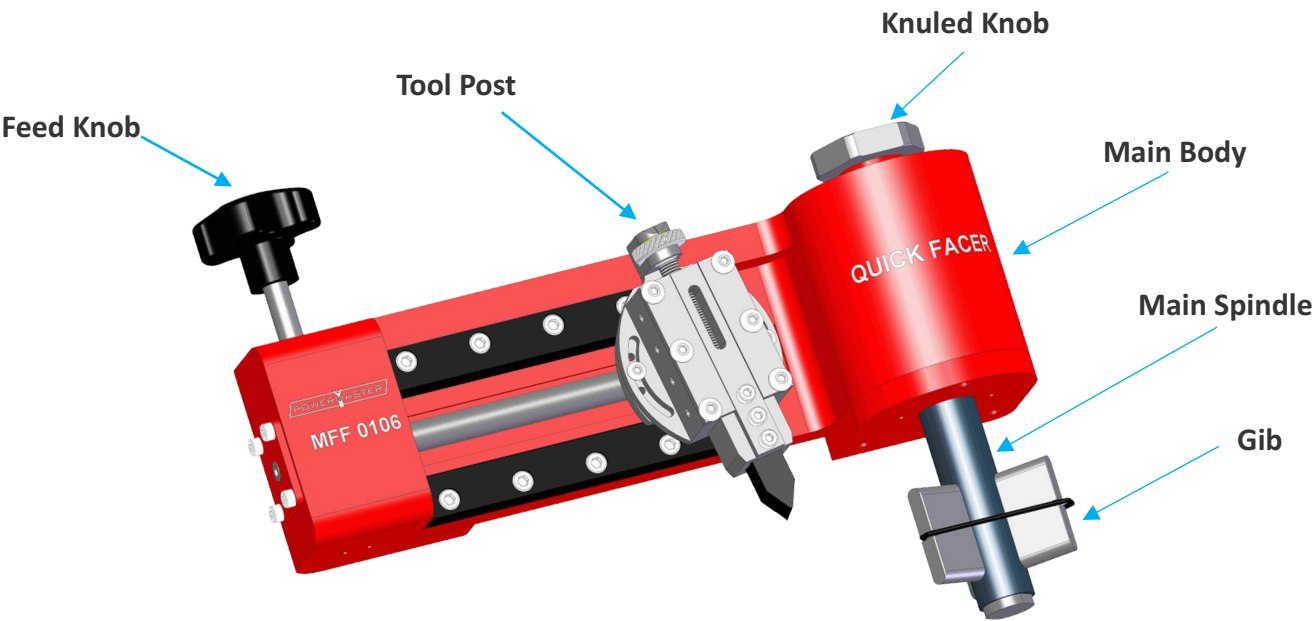


Features

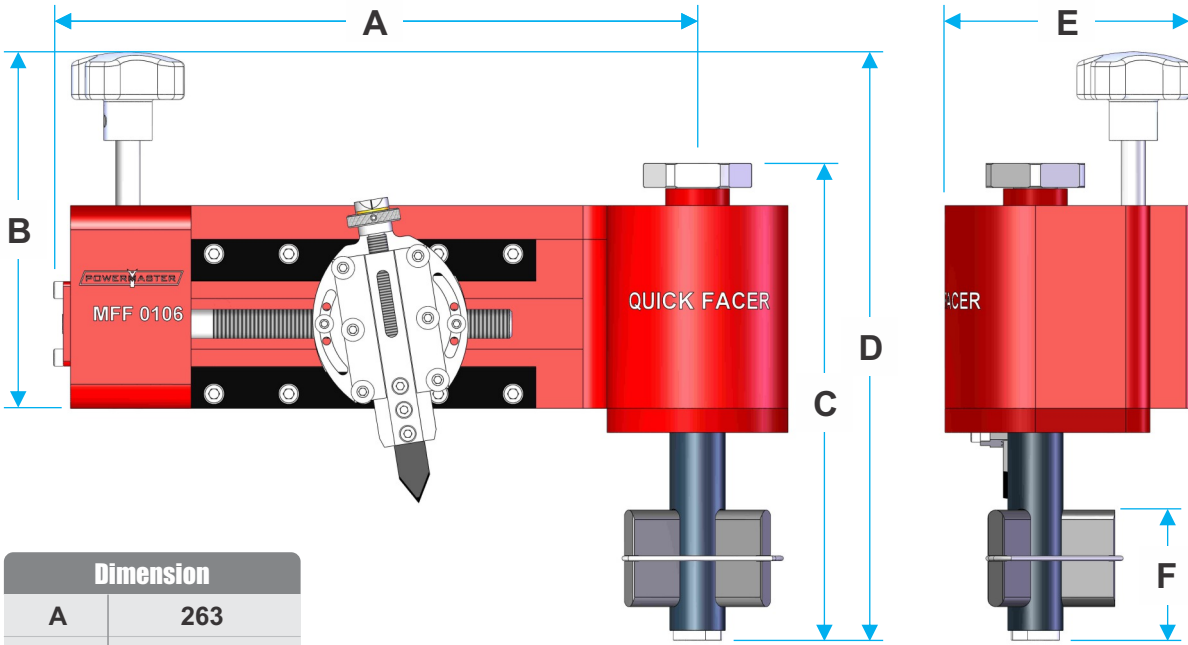
- Light weight and compact design (6.5 kg.).
- Wide Mounting and Facing operation range.
- Worm Gear mechanism and Lead screw mechanism provides perfect spiral surface finish.
- Innovative design, cost effective, simple to use one man hand operated.
- Eliminates the need for pneumatic, electric or hydraulic power.

TECHNICAL DETAILS

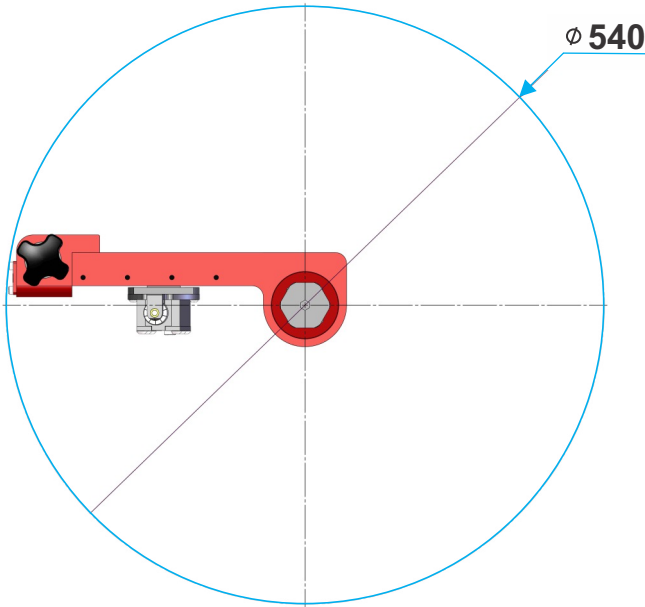
Specification		
Locking Range	mm	25.4 - 152.4
	(inch)	(1" - 6")
Application Range	mm	25.4-304.8
	(inch)	(1"-12")
Net Weight	kg	6.5
	(lb)	(14.3)



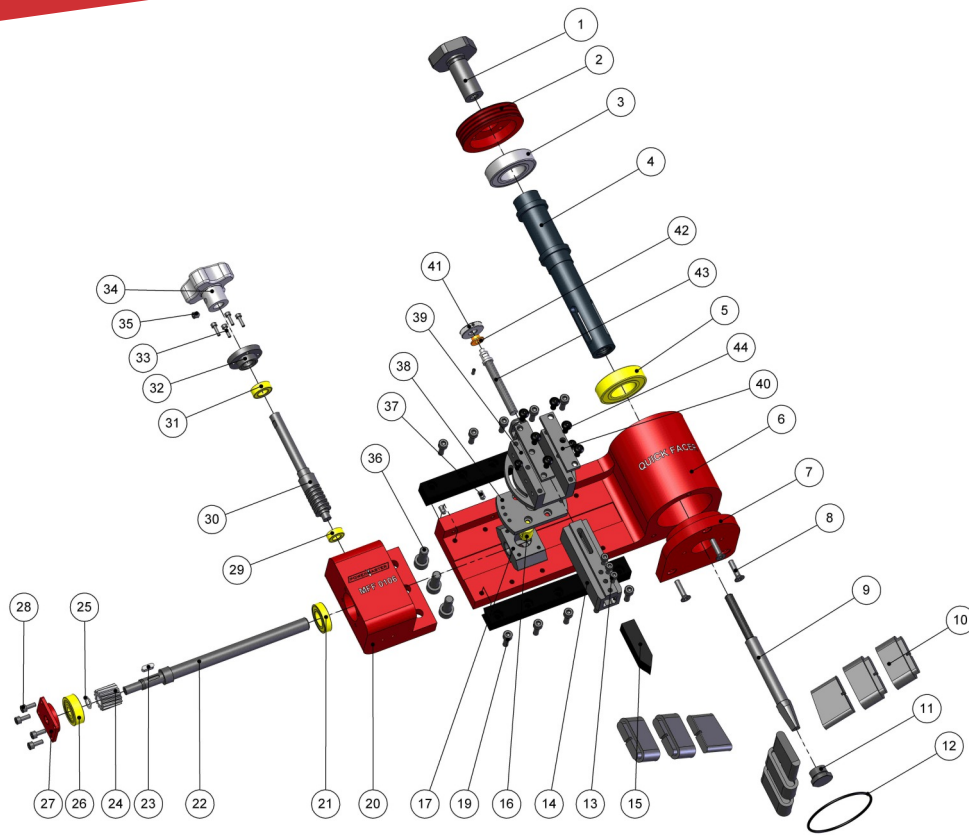
OPERATIONAL DIMENSIONS



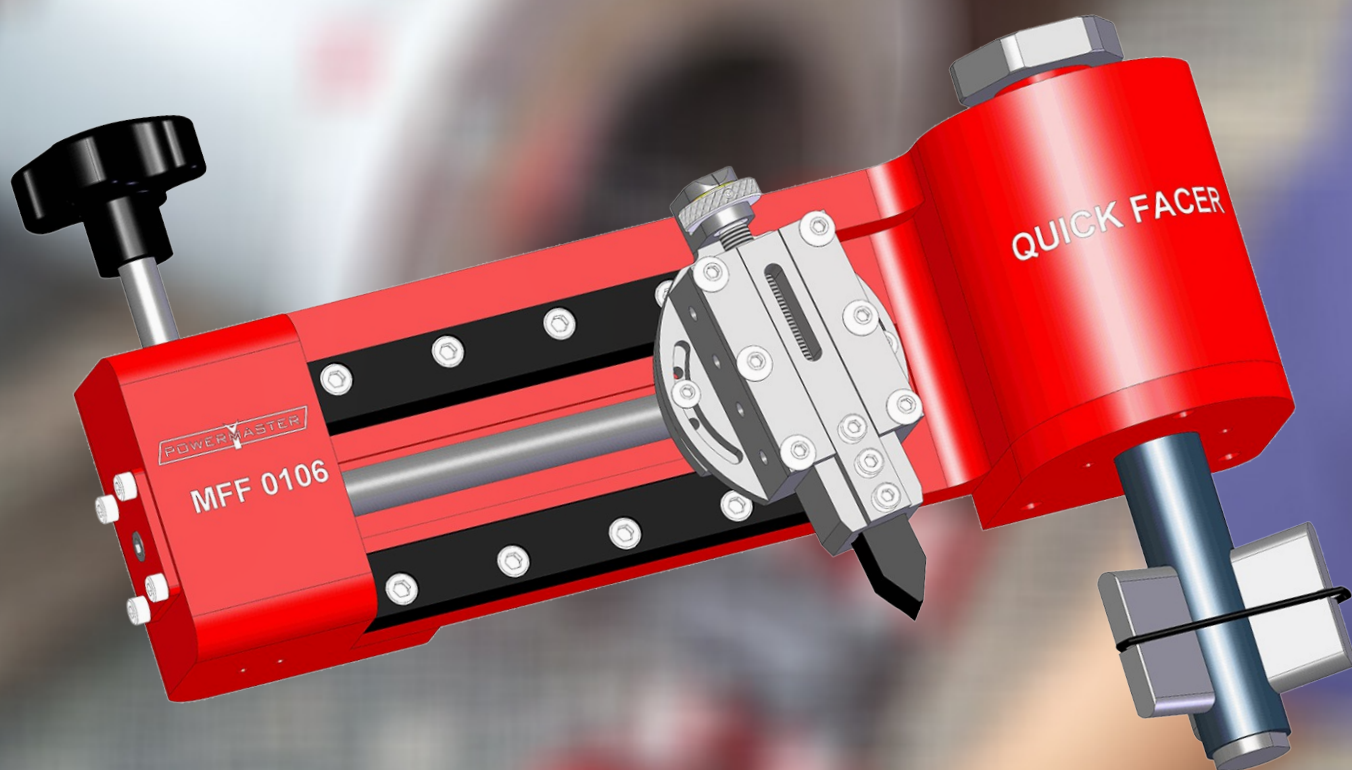
Dimension	
A	263
B	149
C	198
D	244
E	102
F	57



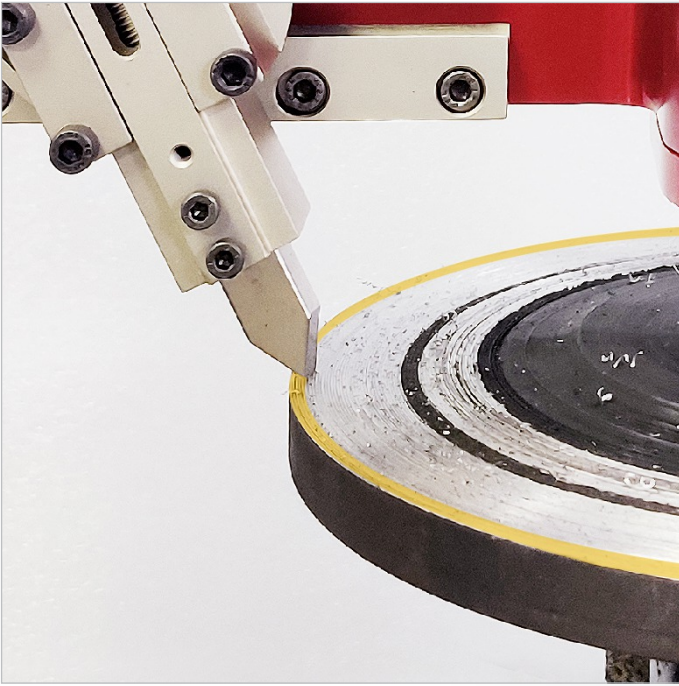
PART LIST



Part No.	Description	Qty.	Part No.	Description	Qty.
1	Expansion Nut	1	23	Key	1
2	Bearing Cap & Nut	1	24	Worm Gear	1
3	Bearing	1	25	Circlip	1
4	Shaft	1	26	Bearing	1
5	Bearing	1	27	Bearing Plate	1
6	Housing	1	28	Allen Cap Screw M4	4
7	Housing Plate	1	29	Bearing	1
8	Csk Screw M6	3	30	Worm Gear	1
9	Central Mandrel	1	31	Bearing	1
10	Extension Jaws	3	32	Bearing Cap	1
11	Adjustment Nut	1	33	Allen Cap Screw M3	4
12	Jaw Clamping O Ring		34	Hand Wheel	1
13	Allen Cap Screw M4	3	35	Grub Screw M6	1
14	Tool Holder	1	36	Allen Cap M10	3
15	Serration Tool Bit	1	37	Grub Screw M5	5
16	Threaded Bush	1	38	Mounting Plate	1
17	Lead Screw Holder	1	39	Swivel Tool Post	1
18	Allen Cap Screw M5	10	40	Tool Holder Plate	2
19	Guide Plate	2	41	Hand Feed Cap	1
20	Worm Gear Body	1	42	Bush	1
21	Bearing	1	43	Holder Lead Screw	1
22	Lead Screw	1	44	Allen Cap Screw M4	6



MFF-16
MANUAL FLANGE FACER



POWERMASTER ENGINEERS PVT. LTD.

A-701-702, T.T.C. Industrial Area,
Mahape-Turbhe Road, M.I.D.C.,
Khairne, Navi Mumbai - 400 705, INDIA.

Phone: +91.22.67619100

Website: www.powermaster.in

email: sales@powermaster.in