

# SF-26

## TUBE / PIPE BEVELLING AND CUTTING SPLIT FRAME MACHINE

Light and Portable Flange/Pipe Beveling and Cutting Split Frame Machine

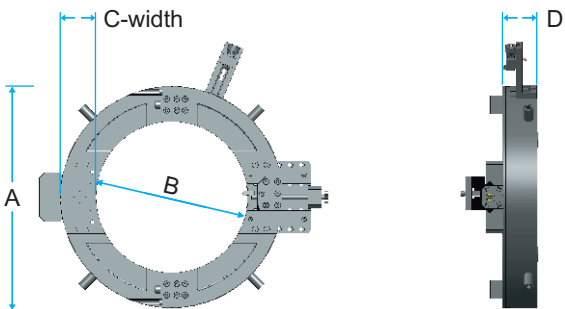
Locking Range 50.8mm OD to 152.4mm OD (2" - 6")

Externally mounted SF-26 is a split frame, clamshell type light and portable design. A rugged and slim machine suitable for tubes and pipes in the size range of 50.8 mm to 152.4 mm in external diameter. It is a new generation heavy duty facing, beveling and cutting machine designed for the Piping industry.



### Technical Specification

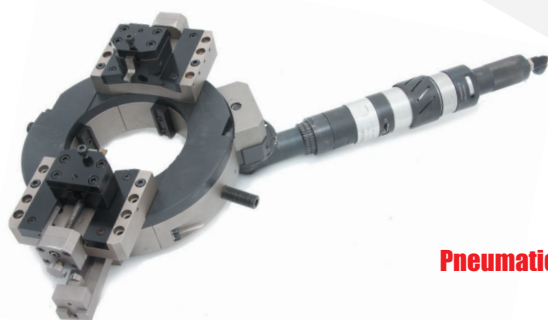
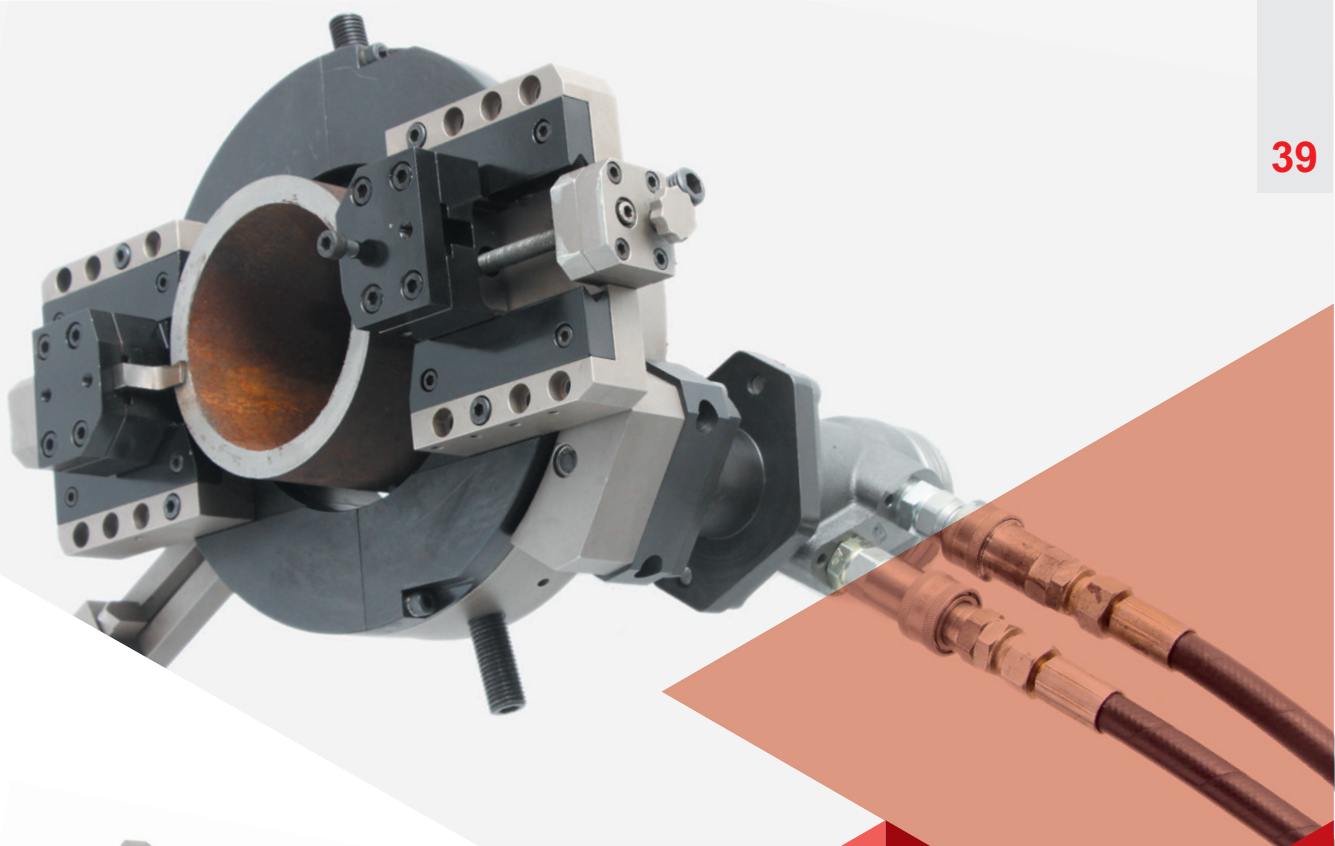
Drive		Pneumatic	Electric	Hydraulic
Locking Range	mm	50.8 - 152.4	50.8 - 152.4	50.8 - 152.4
	(inch)	(2" - 6")	(2" - 6")	(2" - 6")
Idle Speed	rpm	34	37	35
Power Consumption	HP/Watts	4 HP	1.5HP/1100Watts	5 HP(3 PHASE)
Air Consumption	cfm	95	-	-
Air Pressure Bar	bar (psi)	6.2 (90)	-	-
Voltage	V	-	230	415
Net Machine Weight	kg (lb)	17.5 (38.5)	17.5 (38.5)	17.5 (38.5)
Tool Holder Weight	kg (lb)	4.0 (8.8)	4.0 (8.8)	4.0 (8.8)
Drive Weight	kg (lb)	7.0 (15.4)	6.0 (13.2)	7.0 (15.4)



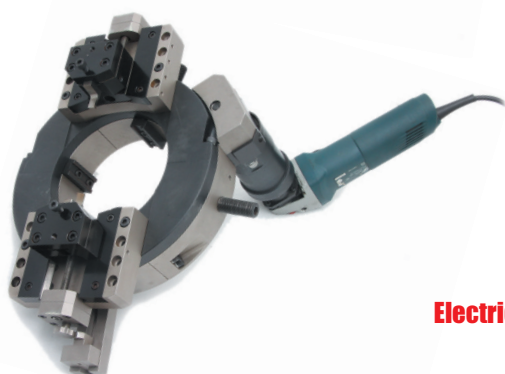
	Pneumatic (mm)	Electric (mm)	Hydraulic (mm)
A	304	304	304
B	178	178	178
C	63	63	63
D	76	76	76

### Features

- 1 SPLIT FRAME MACHINE** - It consists of a split mobile ring and fixed ring. Light weight, slim design.
- 2 JAWS** - Wedge style hardened tool steel jaws for maximum life and secure positioning. 8 points of contact locking system. It provides stability and avoids vibration.
- 3 TRIP ASSEMBLY** - It gives an auto feed to the tool bit assembly. Trip can be engaged or disengaged depending on feed required.
- 4 TOOL SLIDE** - Holds the cutting tool bit assembly tightly at the desired position for the cutting and beveling operation. Its robust construction and support to the cutting bits ensures vibration free performance.
- 5 PLANETARY GEAR BOX** - It gives a high speed reduction with increasing torque.
- 6 PNEUMATIC, ELECTRIC OR HYDRAULIC DRIVE** - High quality pneumatic, electric drive or hydraulic for reliable service and long working life.



**Pneumatic**



**Electric**



**Hydraulic**

▼ SF-26 is used for Beveling and Cutting.



**Recommended for :**

**Tube Beveling, Cutting, Piping Industries**